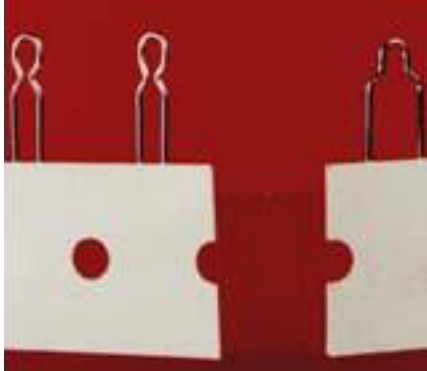


ATP-402 Series Auto Insertable Tape and Reel Test Points

Auto Insertable, Tape & Reel Test Points



Specifications

Materials:

Contact Material: .020" diameter copper wire (24 AWG)

Finish: Bright, electro-tin

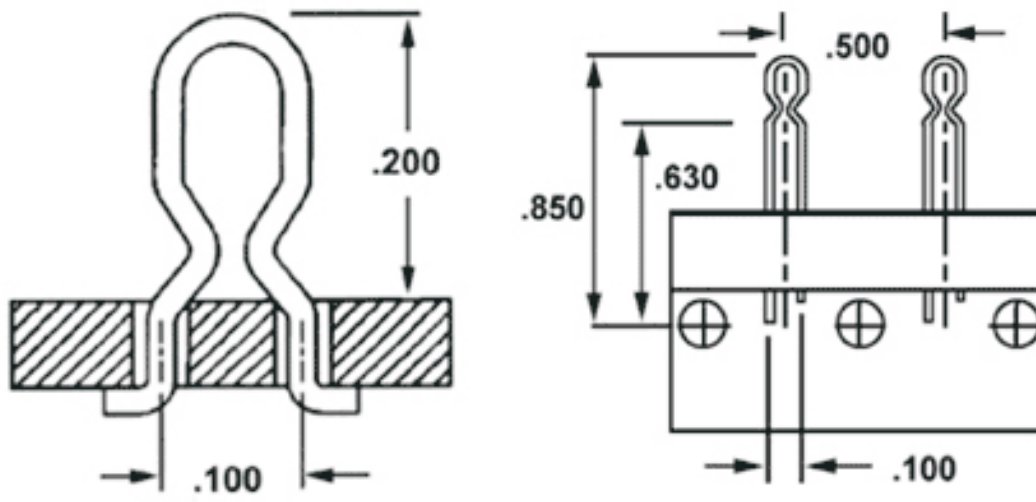
Mounting Holes: .035" to .040" diameter, plated through

Special Notions:

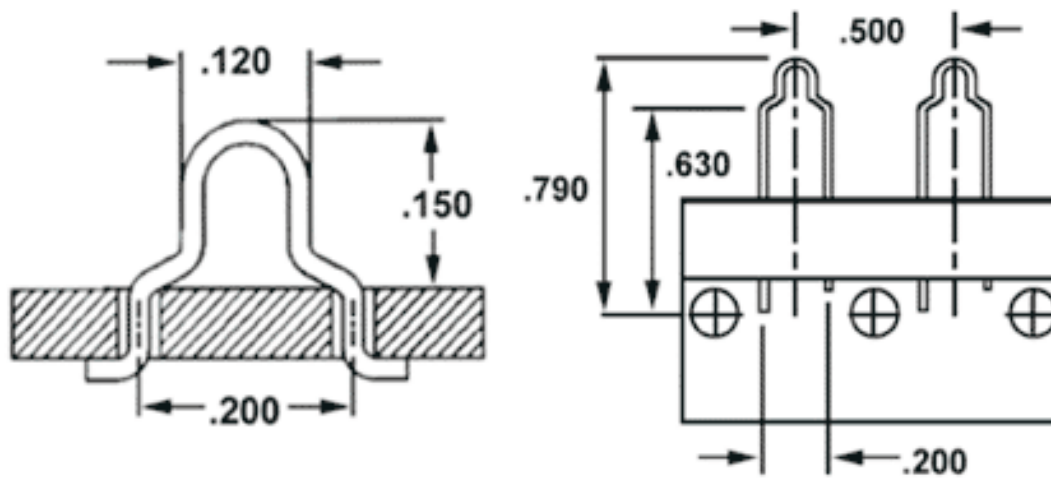
Standard Pack: 5000 pieces per reel

Taping Standard: Universal Instruments Specification #GS-187E

ATP-402-10 Contacts



ATP-402-20 Contacts



Ordering Information

Example:

ATP-402 - 10

● **Series Designation:**
ATP-402

● **Lead Spacing:**
10 = .100"
20 = .200"

Product Description

ATP-402 series test points provide a convenient loop profiled anchor for the board level "troubleshooting" of today's densely populated electronic circuits in a configuration which is fully compatible with automated, mass assembly processes. These units are supplied on a tape-and-reel format which conforms to most radial leaded, component insertion machines and complies with the taping specifications of Universal Instruments Corporation.

Within the ATP-402 series there are two choices of test point. The ATP-402-10 provides an oval configured loop and has mounting leads on .100" centers. The ATP-402-20 is a lower profiled device with an "above board" height of .150" and mounting leads on .200" centers. Both of these units are formed from .020" diameter copper wire, have an electro tin finish and are packaged on standard reels of 5000.

Certificate of Compliance with Directive 2011/65/EU RoHS and EU Regulation EC 1907/2006

This is to certify that Components Corporation designs, manufactures and supplies products to our customers that are in compliance with Directive 2011/65/EU RoHS and EU Regulation EC 1907/2006, 84 SVH. This also pertains to procurement of raw material, component parts and processes.